

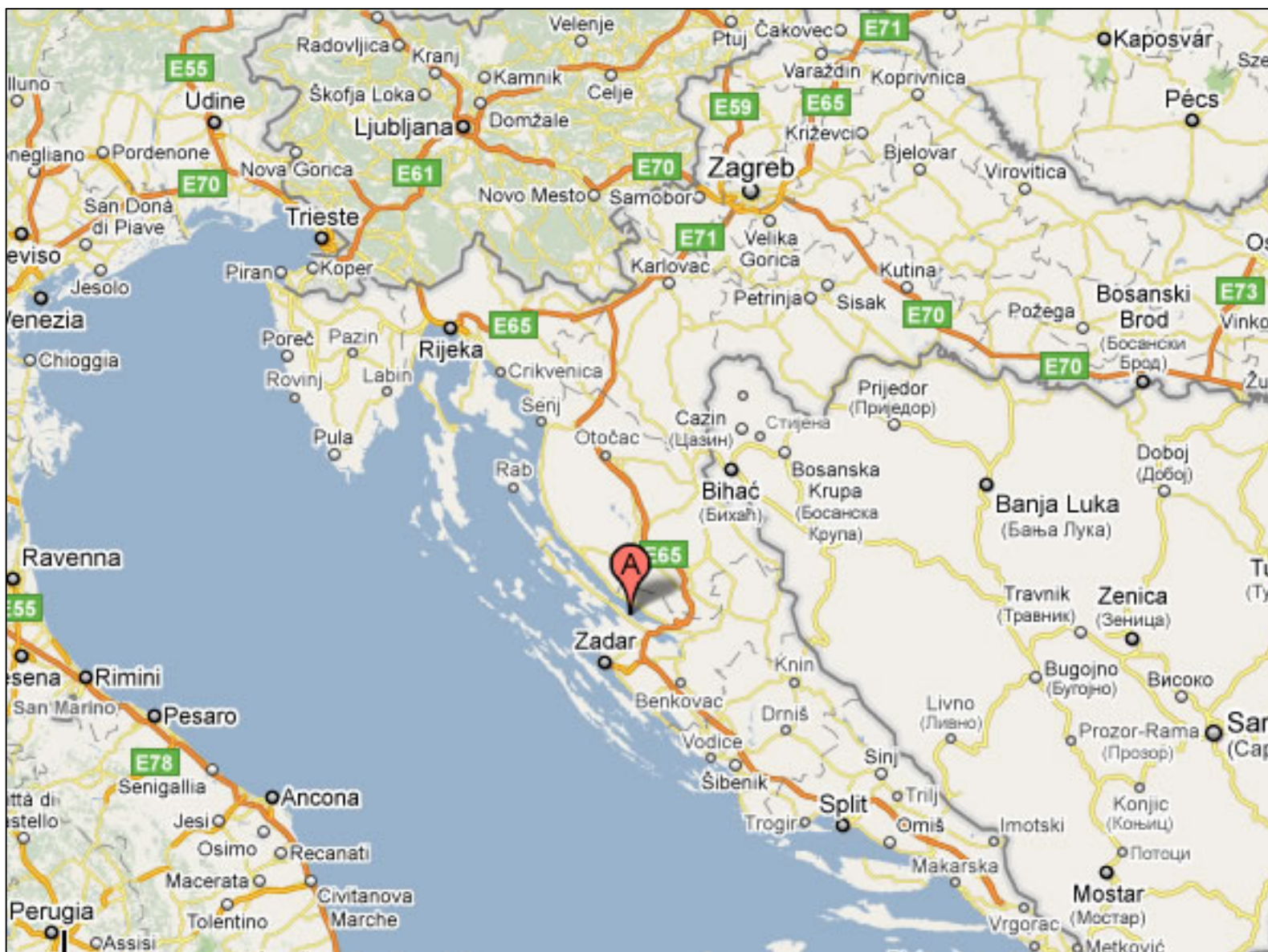
# Katalog luksuznih apartmana Ražanac

## Catalog of luxury apartments Ražanac



- 300 m do mora
- Parking uključen
- Kvalitetna gradnja
- Pogled na more

- 300 m to the sea
- Parking included
- Quality construction
- View to sea





**Zagreb – Ražanac: 275 km**

**Ljubljana – Ražanac: 394 km**

**Budapest – Ražanac: 617 km**

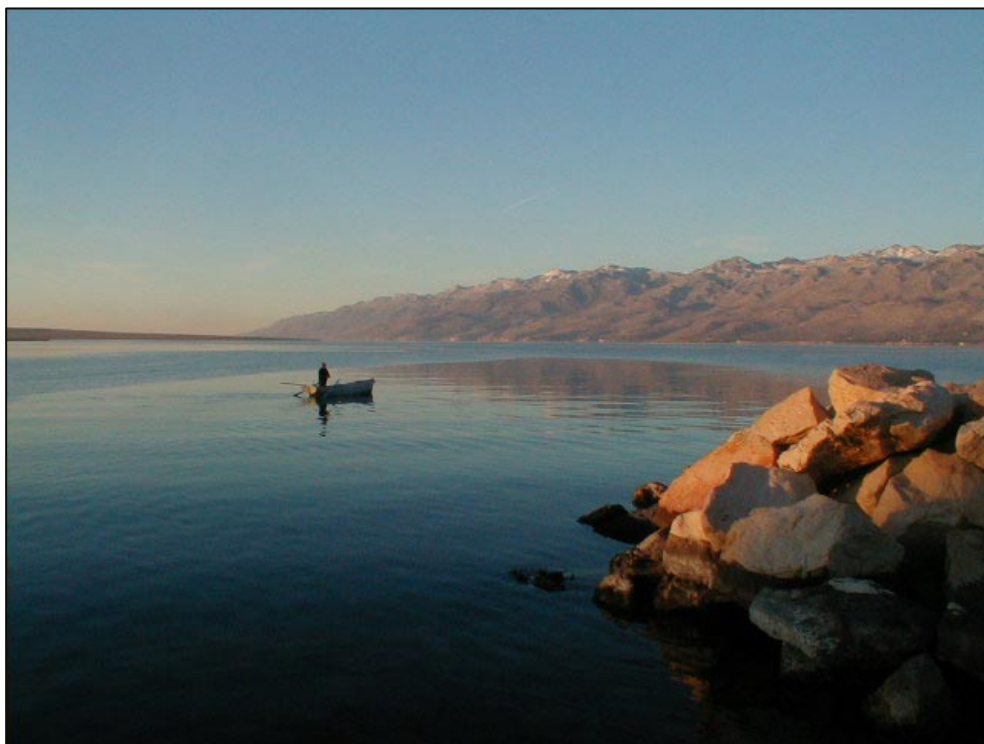
**Wien – Ražanac: 622 km**

**München – Ražanac: 803 km**

**Ancona – Ražanac: 198 km**

**Bratislava – Ražanac: 698 km**

**Praha – Ražanac: 967 km**





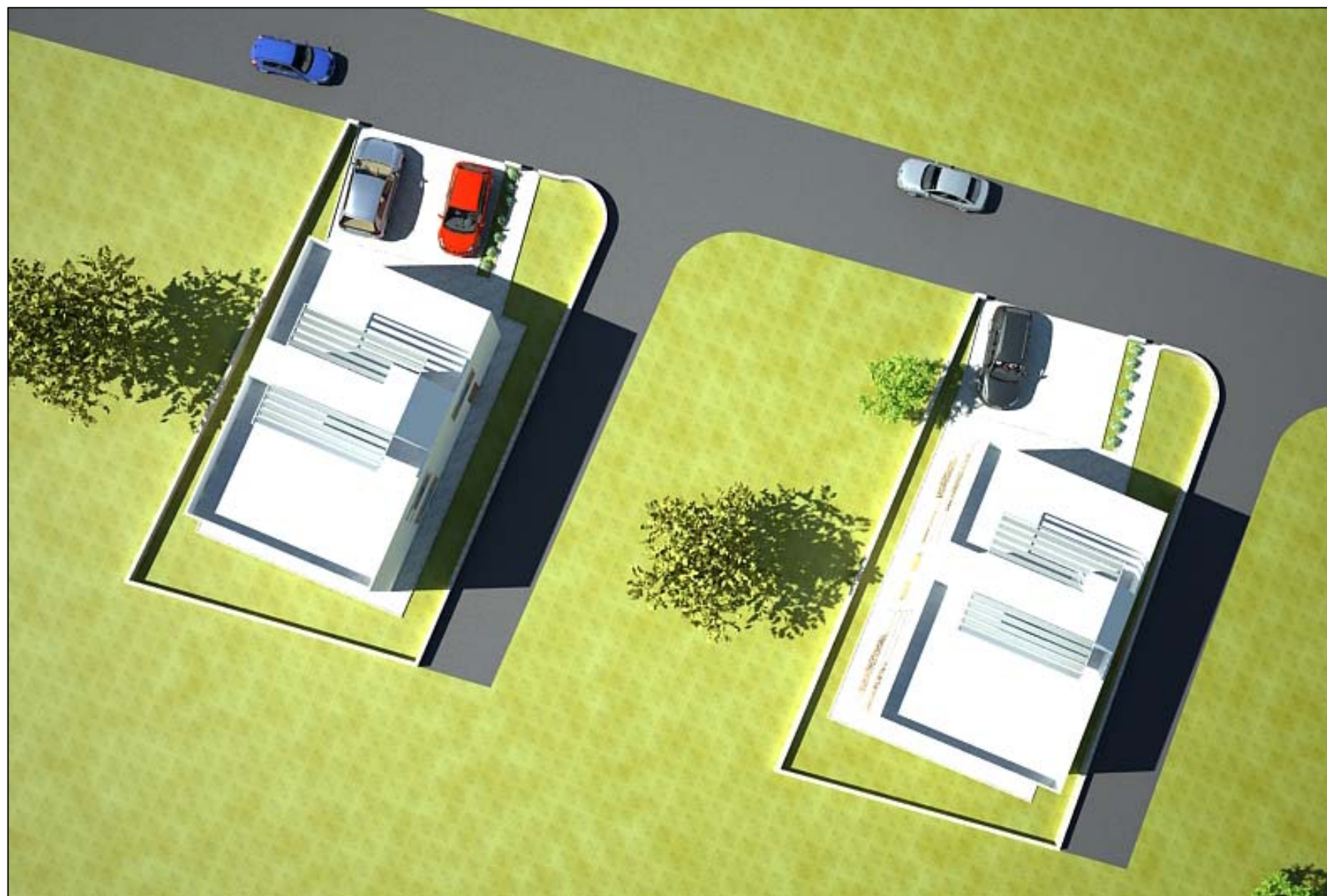


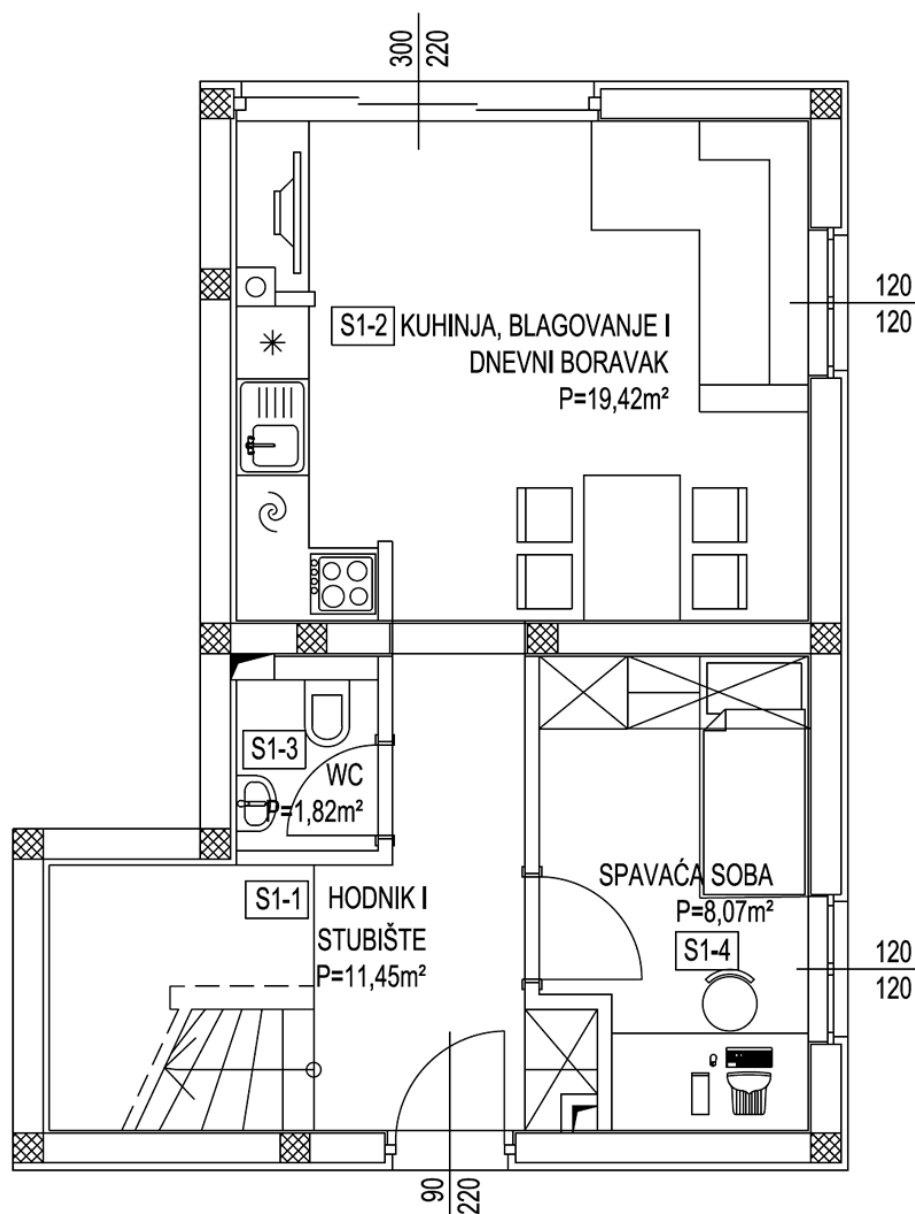








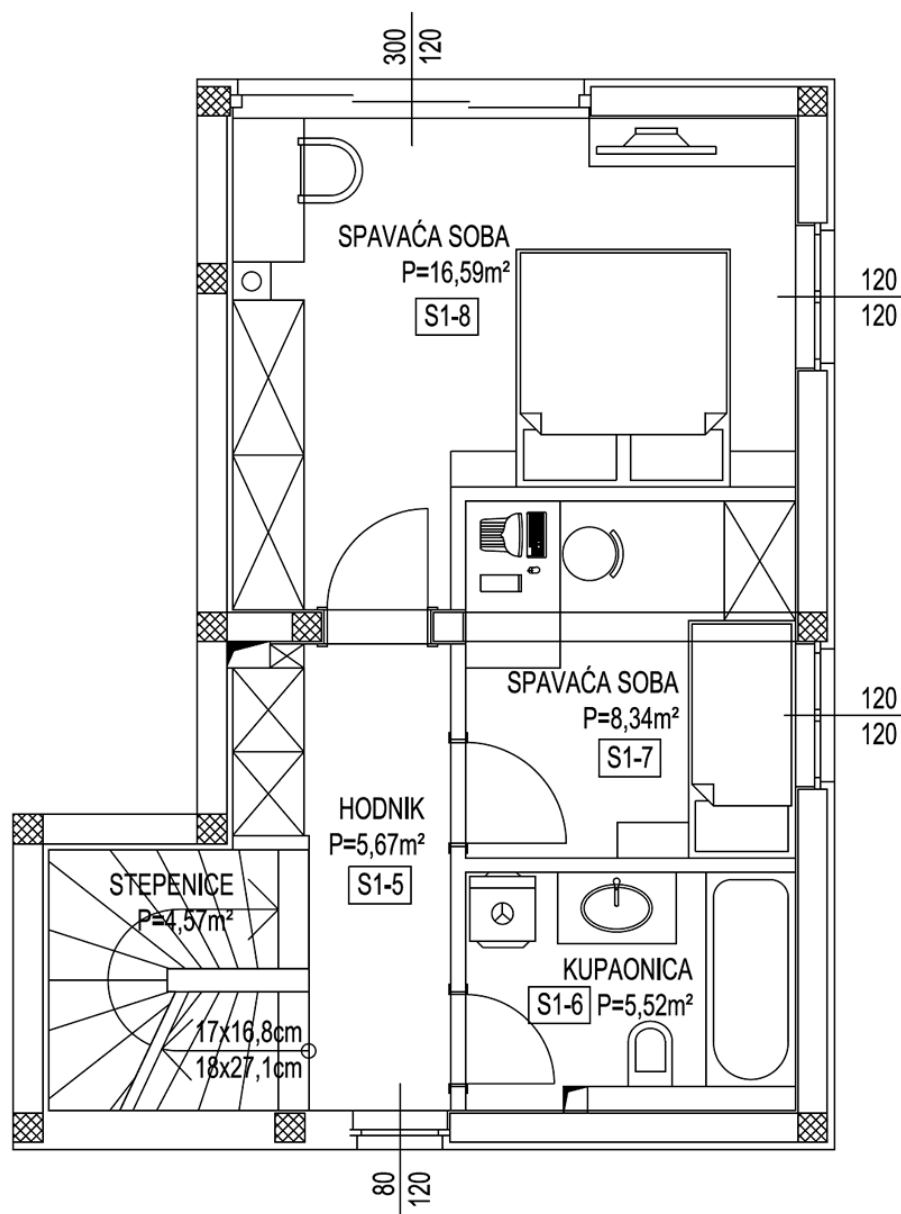


**Prizemlje - Apartman 1**

Hodnik i stubište	11,45 m <sup>2</sup>
Kuhinja, blagov. i dnevni boravak	19,42 m <sup>2</sup>
WC	1,82 m <sup>2</sup>
Spavaća soba	8,07 m <sup>2</sup>
<b>UKUPNO PRIZEMLJE</b>	<b>40,76 m<sup>2</sup></b>

**Ground Floor - Apartment 1**

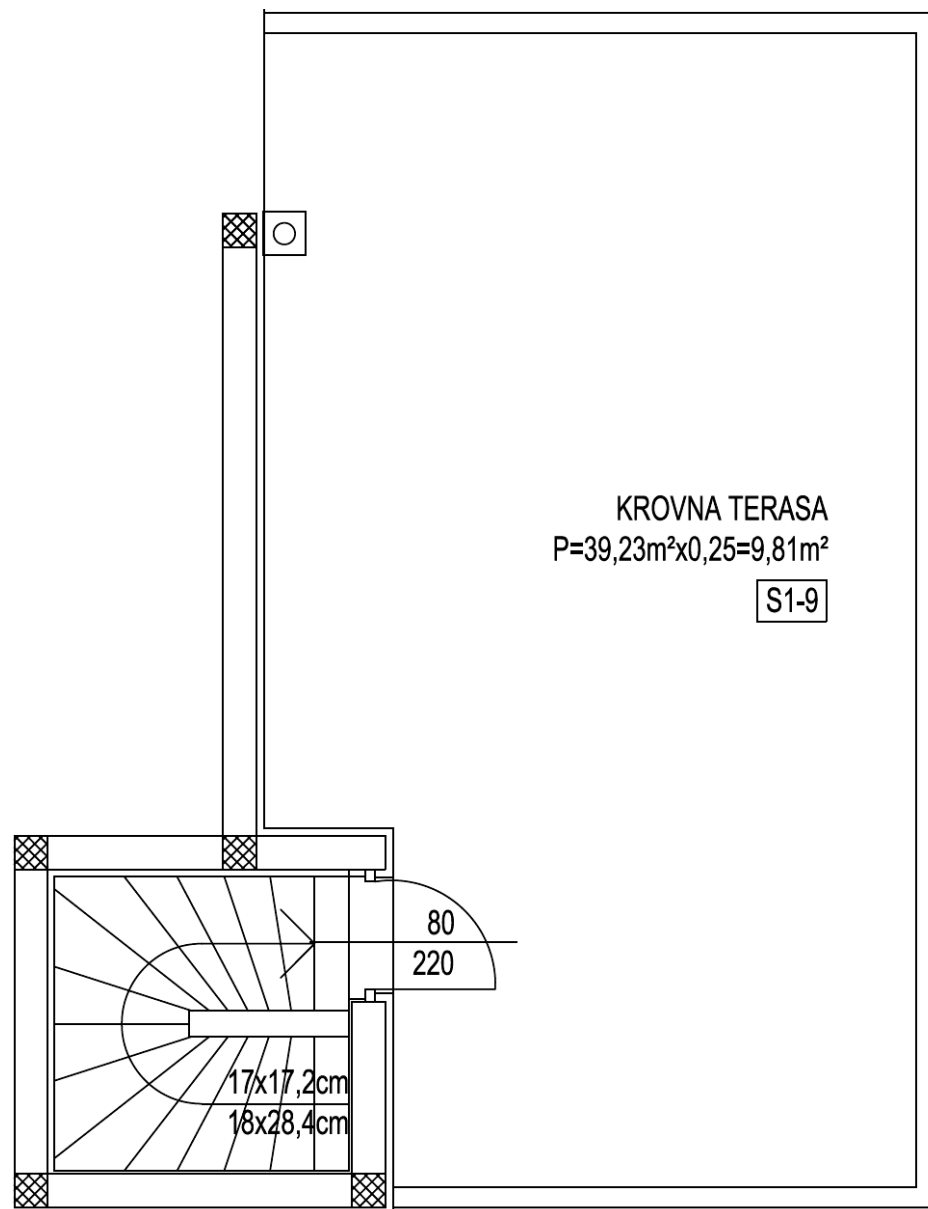
Hallway and stairs	11,45 m <sup>2</sup>
Kitchen, dining and living room	19,42 m <sup>2</sup>
WC	1,82 m <sup>2</sup>
Bedroom	8,07 m <sup>2</sup>
<b>TOTAL FLOOR</b>	<b>40,76 m<sup>2</sup></b>

**Kat - Apartman 1**

Hodnik	5,67 m <sup>2</sup>
Kupaonica	5,52 m <sup>2</sup>
Spavaća soba	8,34 m <sup>2</sup>
Spavaća soba	16,59 m <sup>2</sup>
<b>UKUPNO KAT</b>	<b>36,12 m<sup>2</sup></b>

**Floor - Apartment 1**

Hall	5,67 m <sup>2</sup>
Bathroom	5,52 m <sup>2</sup>
Bedroom	8,34 m <sup>2</sup>
Bedroom	16,59 m <sup>2</sup>
<b>TOTAL FLOOR</b>	<b>36,12 m<sup>2</sup></b>

**Krovna terasa - Apartman 1**

Krovna terasa (39,23 m<sup>2</sup> × 0,25) 9,81 m<sup>2</sup>

**UKUPNO TERASA 9,81 m<sup>2</sup>**

**Roof terrace - Apartment 1**

Roof terrace (39,23 m<sup>2</sup> × 0,25) 9,81 m<sup>2</sup>

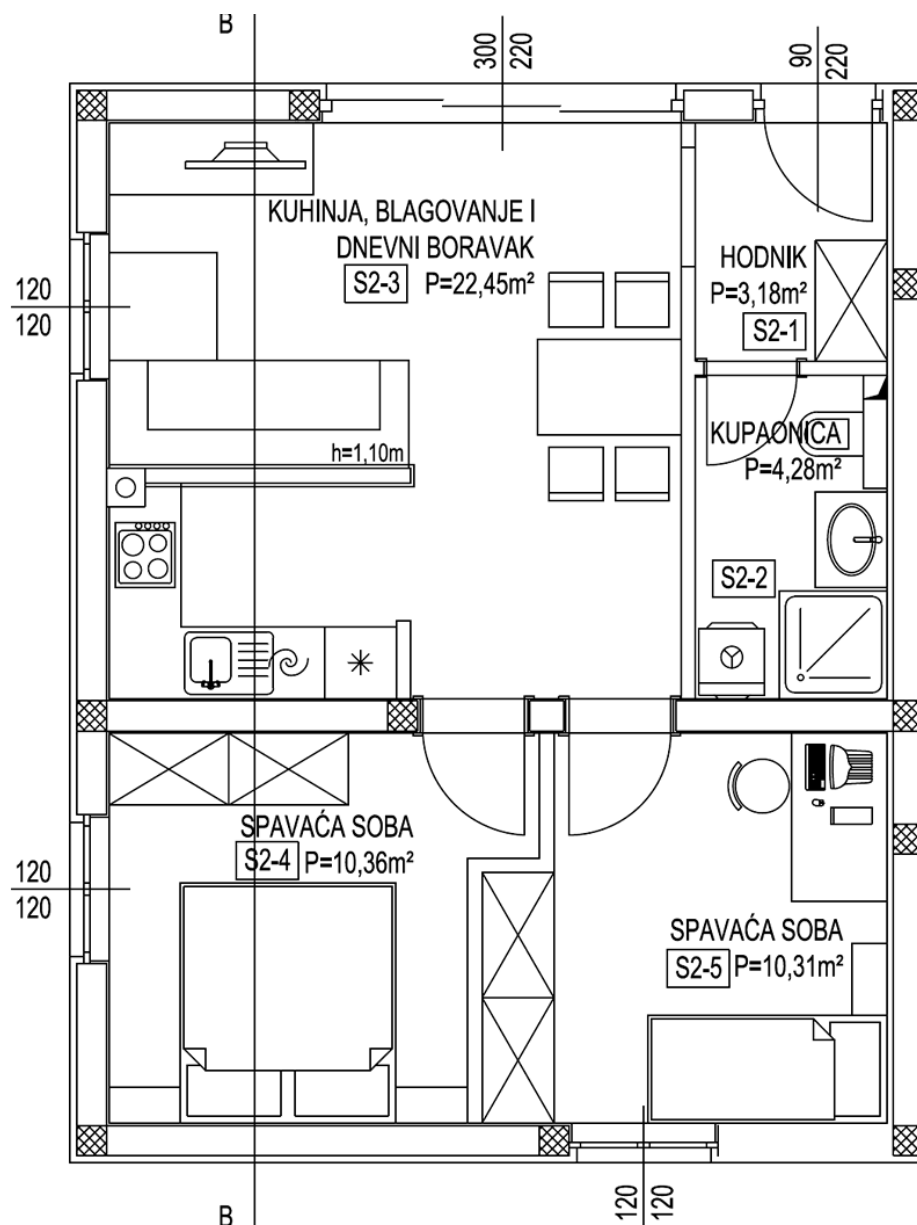
**TOTAL TERRACE 9,81 m<sup>2</sup>**

**Prizemlje + Kat + Krovna terasa - Apartman 1**

Prizemlje	40,76 m <sup>2</sup>
Kat	36,12 m <sup>2</sup>
Krovna terasa (39,23 m <sup>2</sup> × 0,25)	9,81 m <sup>2</sup>
<b>UKUPNA POVRŠINA</b>	<b>86,69 m<sup>2</sup></b>

**Ground + Floor + Roof Terrace - Apartment 1**

Ground Floor	40,76 m <sup>2</sup>
Floor	36,12 m <sup>2</sup>
Roof Terrace (39,23 m <sup>2</sup> × 0,25)	9,81 m <sup>2</sup>
<b>TOTAL AREA</b>	<b>86,69 m<sup>2</sup></b>



### Prizemlje - Apartman 2

Hodnik	3,18 m <sup>2</sup>
Kupaonica	4,28 m <sup>2</sup>
Kuhinja, blagov. i dnevni boravak	22,34 m <sup>2</sup>
Spavaća soba	10,36 m <sup>2</sup>
Spavaća soba	10,31 m <sup>2</sup>
<b>UKUPNO PRIZEMLJE</b>	<b>50,47 m<sup>2</sup></b>

### Ground Floor - Apartment 2

Hall	3,18 m <sup>2</sup>
Bathroom	4,28 m <sup>2</sup>
Kitchen, dining and living room	22,34 m <sup>2</sup>
Bedroom	10,36 m <sup>2</sup>
Bedroom	10,31 m <sup>2</sup>
<b>TOTAL FLOOR</b>	<b>50,47 m<sup>2</sup></b>

**Prizemlje - Apartman 2**

Prizemlje	50,47 m <sup>2</sup>
-----------	----------------------

---

<b>UKUPNA POVRŠINA</b>	<b>50,47 m<sup>2</sup></b>
------------------------	----------------------------

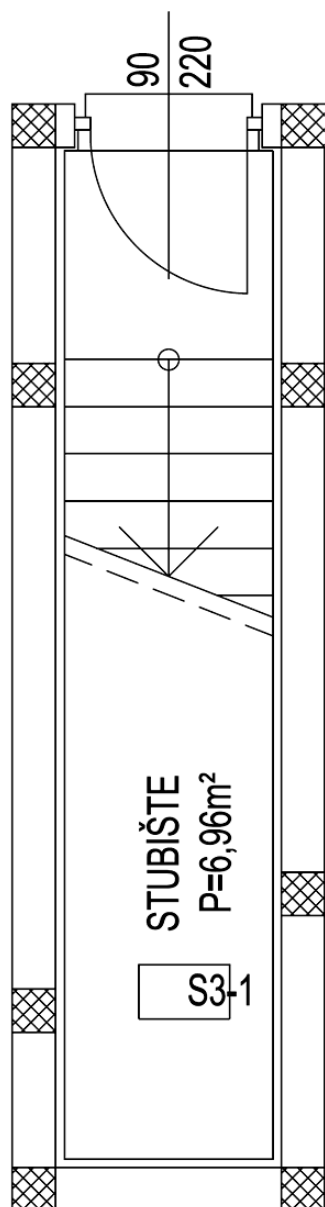
**Ground - Apartment 2**

Ground Floor	50,47 m <sup>2</sup>
--------------	----------------------

---

<b>TOTAL AREA</b>	<b>50,47 m<sup>2</sup></b>
-------------------	----------------------------

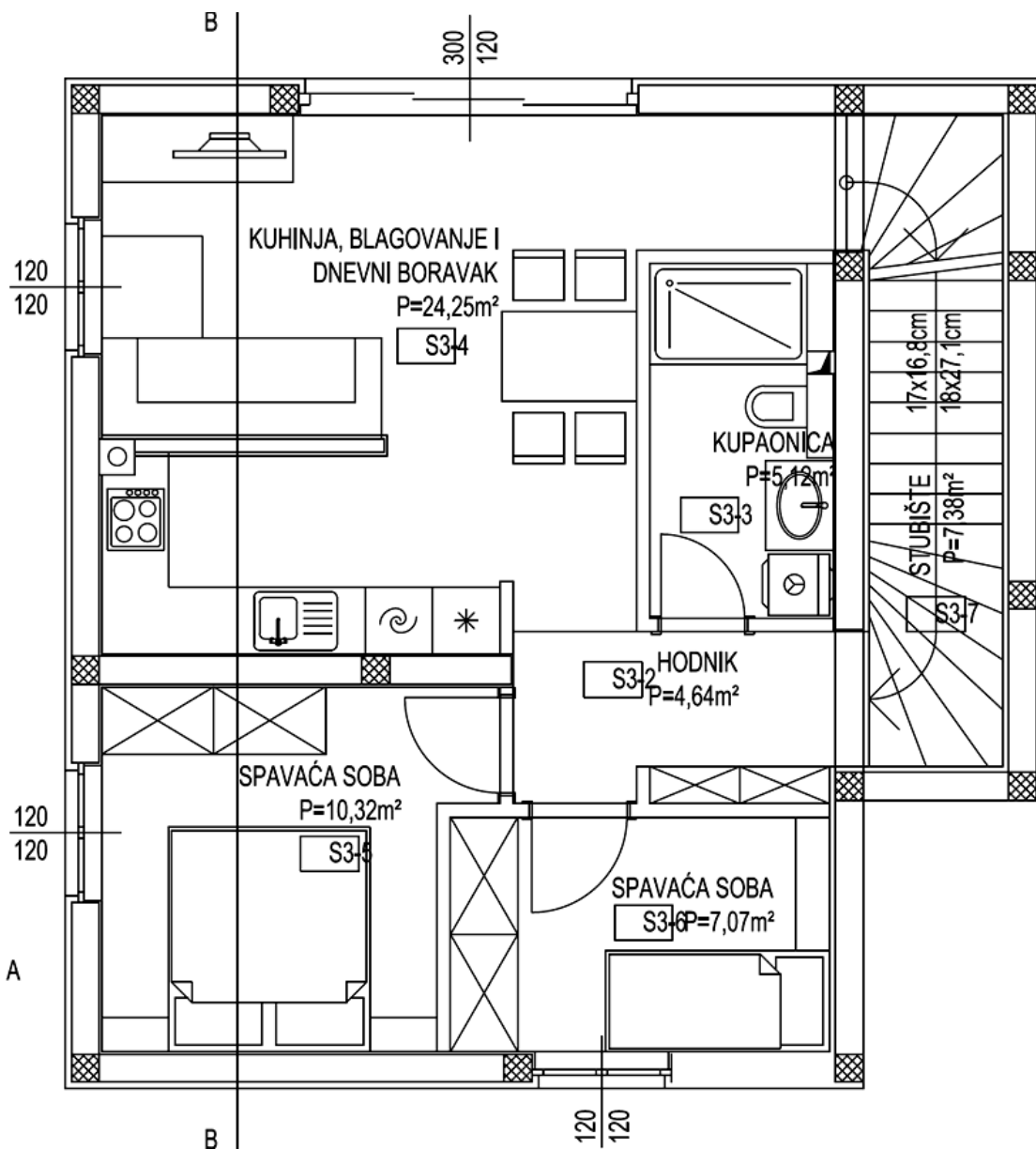


**Prizemlje - Apartman 3**

Stubište	6,96 m <sup>2</sup>
<b>UKUPNO PRIZEMLJE</b>	<b>6,96 m<sup>2</sup></b>

**Ground Floor - Apartment 3**

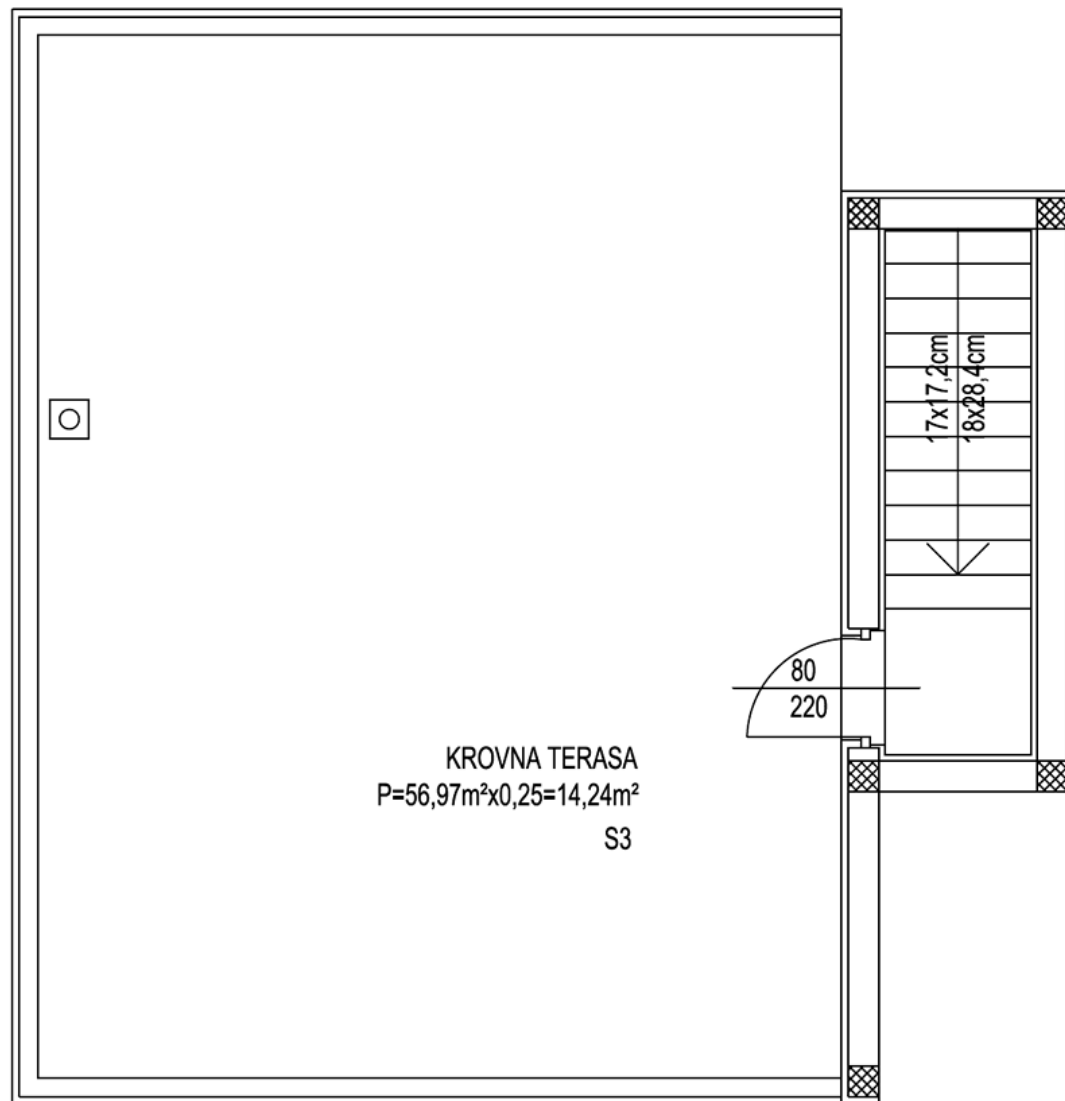
Staircase	6,96 m <sup>2</sup>
<b>TOTAL FLOOR</b>	<b>6,96 m<sup>2</sup></b>

**Kat - Apartman 3**

Hodnik i stubište	12,02 m <sup>2</sup>
Kupaonica	5,12 m <sup>2</sup>
Kuhinja, blagov. i dnevni boravak	24,25 m <sup>2</sup>
Spavaća soba	10,32 m <sup>2</sup>
Spavaća soba	7,07 m <sup>2</sup>
<b>UKUPNO KAT</b>	<b>58,78 m<sup>2</sup></b>

**Floor - Apartment 3**

Hall and staircase	12,02 m <sup>2</sup>
Bathroom	5,12 m <sup>2</sup>
Kitchen, dining and living room	24,25 m <sup>2</sup>
Bedroom	10,32 m <sup>2</sup>
Bedroom	7,07 m <sup>2</sup>
<b>TOTAL FLOOR</b>	<b>58,78 m<sup>2</sup></b>

**Krovna terasa - Apartman 3**

Krovna terasa (56,97 m<sup>2</sup> × 0,25) 14,24 m<sup>2</sup>

**UKUPNO TERASA 14,24 m<sup>2</sup>**

**Roof terrace - Apartment 3**

Roof terrace (56,97 m<sup>2</sup> × 0,25) 14,24 m<sup>2</sup>

**TOTAL TERRACE 14,24 m<sup>2</sup>**

**Prizemlje + Kat + Krovna terasa - Apartman 3**

Prizemlje	6,96 m <sup>2</sup>
Kat	58,78 m <sup>2</sup>
Krovna terasa (56,97 m <sup>2</sup> × 0,25)	14,24 m <sup>2</sup>
<b>UKUPNA POVRŠINA</b>	<b>79,98 m<sup>2</sup></b>

**Ground + Floor + Roof Terrace - Apartment 3**

Ground Floor	6,96 m <sup>2</sup>
Floor	58,78 m <sup>2</sup>
Roof Terrace (56,97 m <sup>2</sup> × 0,25)	14,24 m <sup>2</sup>
<b>TOTAL AREA</b>	<b>79,98 m<sup>2</sup></b>

**Investira / gradi / prodaje**

**Jurman d.o.o.**

Rudeška cesta 236

10000 Zagreb

Tel. + 385 (0) 1/55 77 55 7

Fax. + 385 (0) 1/55 09 59 3

E-mail: info@jurman.hr

web: www.jurman.hr

**Invest / build / sales**

**Jurman d.o.o.**

Rudeška cesta 236

10000 Zagreb

Tel. + 385 (0) 1/55 77 55 7

Fax. + 385 (0) 1/55 09 59 3

E-mail: info@jurman.hr

web: www.jurman.hr



**Jurman d.o.o.**

građenje · proizvodnja · trgovina · usluge